

全九州選手権大会



Oil Pattern Distance: 40 Feet **Reverse Brush Drop:** 40 Feet **Oil Per Board:** 40 uL
Forward Oil Total: 14.68 mL **Reverse Oil Total:** 12.24 mL **Volume Oil Total:** 26.92 mL
Forward Boards Crossed: 367 Boards **Reverse Boards Crossed:** 306 Boards **Total Boards Crossed:** 673 Boards

	Start	Stop	Loads	Speed	Crossed	Start	End	Feet	T.Oil
1	2L	2R	2	14	74	0.0	1.9	1.9	2960
2	5L	5R	2	14	62	1.9	5.8	3.9	2480
3	7L	7R	2	18	54	5.8	10.9	5.1	2160
4	9L	9R	2	18	46	10.9	16.0	5.1	1840
5	10L	10R	3	22	63	16.0	25.3	9.3	2520
6	12L	12R	4	22	68	25.3	37.7	12.4	2720
7	2L	2R	0	26	0	37.7	40.0	2.3	0

	Start	Stop	Loads	Speed	Crossed	Start	End	Feet	T.Oil
1	2L	2R	0	26	0	40.0	35.0	-5.0	0
2	12L	12R	2	22	34	35.0	28.8	-6.2	1360
3	11L	11R	2	22	38	28.8	22.6	-6.2	1520
4	10L	10R	2	22	42	22.6	16.4	-6.2	1680
5	7L	7R	3	18	81	16.4	8.8	-7.6	3240
6	2L	2R	3	14	111	8.8	2.9	-5.9	4440
7	2L	2R	0	14	0	2.9	0.0	-2.9	0

Conditioner:
Type In or Select One

TransferType:
Type In or Select One

Forward



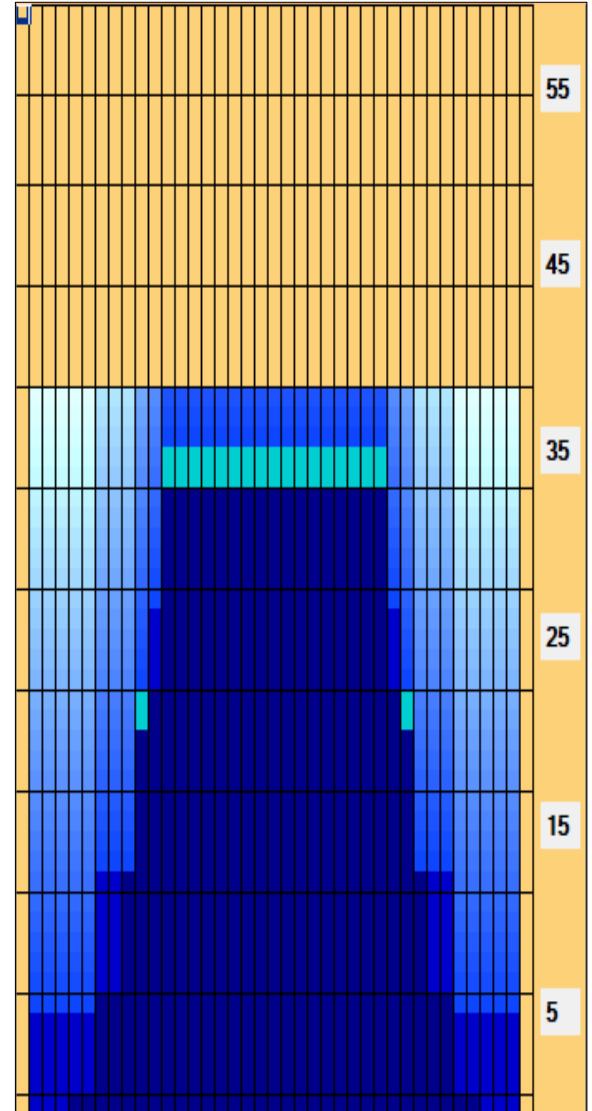
Reverse



Combined



Buff



Item Description	3L-7L:18L-18R Outside Track:Middle	8L-12L:18L-18R Middle Track:Middle	13L-17L:18L-18R Inside Track:Middle	18L-18R:17R-13R Middle: Inside Track	18L-18R:12R-8R Middle:Middle Track	18L-18R:7R-3R Middle:Outside Track
Track Zone Ratio	3.75	1.45	1	1	1.45	3.75

